

Device Statistics (Page 1)



26DAFA128

Printed by Emulation

PS Emulation	2490
PCL5 Emulation	2
PCLXL Emulation	2155
Copy	1178
Total	5825

Jobs by Document Length

Job Length	Job Count	Avg Job Length
1-1 Pages	2602	1
2-4 Pages	2046	2
5-10 Pages	902	6
11-20 Pages	194	14
21-30 Pages	52	26
31-50 Pages	20	37
51-74 Pages	7	59
75-100 Pages	1	87
101+ Pages	1	128
Total	5825	3

Other Job Data

Last Printed Job	2026-03-25
Last Scan Job	2026-03-25

Media Sheet Count

Pick Count

Tray 1 pick roller	0
Tray 2 pick roller	0
Tray 3 pick roller	0
Multipurpose Feeder pick roller	0
Total	0

Media Picked Sheet Count

Picked Sheets	17224
---------------	-------

Media Sheets Picked

A4-Plain Paper	17136
A3-Plain Paper	88
Total	17224

Media Printed Sheet Count

Printed Sheets

Print	12746
Copy	4475
Total	17221

Media Sheets Printed

A4-Plain Paper	17133
A3-Plain Paper	88
Total	17221

Media Side Count

Media Picked Side Count

Picked Sides	19162
--------------	-------

Mono Sides Picked

A4-Plain Paper	8697
A3-Plain Paper	6
Total	8703

Color Sides Picked

A4-Plain Paper	10377
A3-Plain Paper	82
Total	10459

Media Printed Side Count

Print

Mono	4809
Color	9463
Total	14272

Copy

Mono	3890
Color	996
Total	4886

Total

Mono	8699
Color	10459

Device Statistics (Page 2)

7559030029990

Total	19158
Mono Sides Printed	
A4-Plain Paper	8692
A3-Plain Paper	6
Total	8698
Color Sides Printed	
A4-Plain Paper	10358
A3-Plain Paper	82
Total	10440

Tiered Coverage Billing

Highlight Color Sides	7210
Business Color Sides	2326
Graphics Color Sides	923
Total	10459

Sides by Toner Darkness

Toner Darkness 1	1
Toner Darkness 4	14272

N-Up Information

N-Up Number	Sides	Logical Pages
1-Up	19158	19158

Print Speed

Pages Per Minute	Sides	Pages
35	17793	15859
18	1365	1362

Scan Usage

Scanned Sides

A4-Copy ADF	958
A4-Copy Flatbed	560
A4-Scan to Email ADF	187
A4-Scan to Host Flatbed	1
A4-Scan to Email Flatbed	4
A4-Copy Duplex	476
JIS B4-Copy Flatbed	4
A5-Copy Flatbed	2
A3-Copy Flatbed	10
A4-Scan to Host ADF	4
A4-Scan to Email Duplex	42
Custom Type 3-Copy Flatbed	1
Total	2249

Scanned Sheets

A4-Copy ADF	958
A4-Copy Flatbed	560
A4-Scan to Email ADF	187
A4-Scan to Host Flatbed	1
A4-Scan to Email Flatbed	4
A4-Copy Duplex	238
JIS B4-Copy Flatbed	4
A5-Copy Flatbed	2
A3-Copy Flatbed	10
A4-Scan to Host ADF	4
A4-Scan to Email Duplex	21
Custom Type 3-Copy Flatbed	1
Total	1990

Scan-to Destinations

Copy	2011
Network	238

Host		5
Email		233
Total	2249	
Flatbed	582	
ADF Simplex	1149	
ADF Duplex	518	

Device Statistics (Page 3)

7559030029990

Environmental Cost Data

ON Time	38057:27:54
Off Time	7206:20:29
Active Time	168:27:55
Idle Time	2297:28:58
Sleep Time	35590:29:44
Warm up total time	1:01:13

Supply Information

Black Cartridge

Serial Number	LEX03025005007013056032002255
Install Date	2026-04-13



Supply Level	34000
Capacity	0
Sides on Supply	No
Return Program	No
Genuine	

↑
84%

Estimated Coverage History

Last Job	3
Printer Lifetime	4.0
Installed Supply	0.0
Previous Supply	4.0

Cyan Cartridge

Serial Number	LEX00024003001010028030002255
Install Date	2025-03-25



Supply Level	30000
Capacity	1593
Sides on Supply	No
Return Program	No
Genuine	

↑
97%

Estimated Coverage History

Last Job	0
Printer Lifetime	<2
Installed Supply	1.5
Previous Supply	2.5

Magenta Cartridge

Serial Number	LEX02024003026012059048002255
Install Date	2025-03-05



Supply Level	30000
Capacity	1929
Sides on Supply	No
Return Program	No
Genuine	

↑
97%

Estimated Coverage History

Last Job	0
Printer Lifetime	<2
Installed Supply	1.6
Previous Supply	2.6

Yellow Cartridge

Serial Number	LEX01023012001012058005002255
Install Date	2025-03-05



Supply Level	30000
Capacity	1929
Sides on Supply	No
Return Program	No
Genuine	

↑
96%

Estimated Coverage History

Last Job	0
Printer Lifetime	<2
Installed Supply	1.9
Previous Supply	3.2

Black Photoconductor

Install Date	2025-01-09
--------------	------------

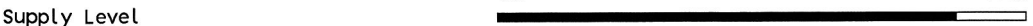


Supply Level	100000
Capacity	LEX10F0
Serial Number	
Genuine	

↑
73%

Cyan Photoconductor

Install Date	2025-01-09
--------------	------------



Supply Level	
--------------	--

↑
87%

Device Statistics (Page 4)

7559030029990

Capacity 90000
Serial Number LEX11F0
Genuine

Magenta Photoconductor

Install Date 2025-01-09
0% 100%

Supply Level
Capacity 90000
Serial Number LEX12F0
Genuine

↑
87%

Yellow Photoconductor

Install Date 2025-01-09
0% 100%

Supply Level
Capacity 90000
Serial Number LEX13F0
Genuine

↑
87%

Fuser Kit

Supply Level 0% 100%

Capacity
600000

↑
97%

300K Maintenance Kit

Supply Level 0% 100%

Capacity
300000

↑
94%

200K MPF Maintenance Kit

Supply Level OK

Capacity 200000

200K HCF Maintenance Kit

Supply Level OK

Capacity 200000

Black Developer

Supply Level 0% 100%

Capacity
600000

↑
92%

Color Developer Kit (CMY)

Supply Level 0% 100%

Capacity
600000

↑
99%

Waste Toner Bottle

Supply Level OK

Capacity 50000

Staples

Supply Level OK

Capacity 5000

Serial Number

Hole Punch Box

Supply Level OK

Capacity 2500

Serial Number

Staples G11

Supply Level OK

Capacity 5000

Serial Number

Staples G12

Supply Level OK

Capacity 5000

Serial Number

Device Statistics (Page 5)

7559030029990

ADF Kit

Supply Level

OK

Printer

Install Date
Serial Number
Asset Tag
Engine ID
Model Name
Date Printed

2021-04-16
7559030029990
35
Lexmark XC9235
2026-04-13

USB Direct

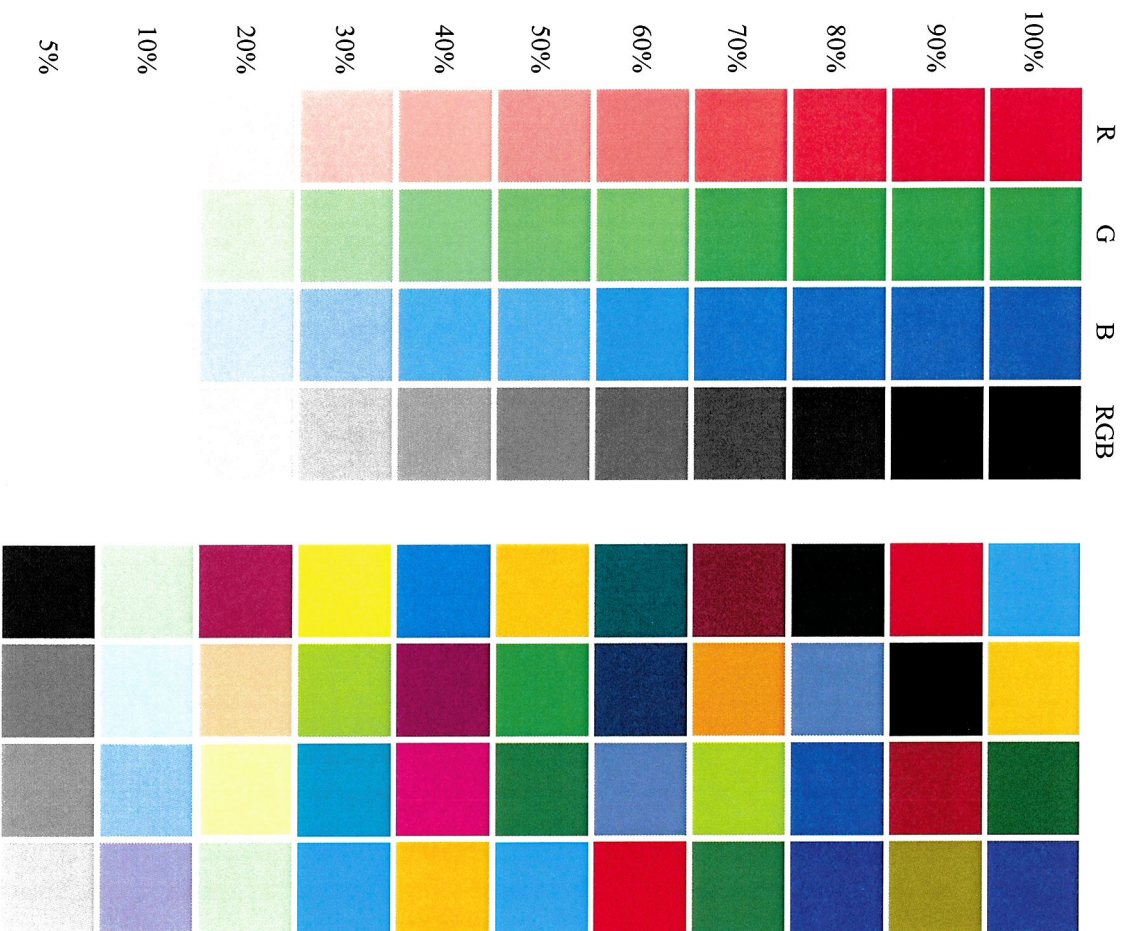
Insertions

22

Device Information

Printer ID	= Device is not connected with Lexmark Cloud Services.
Page Count	= 19161
Installed Memory	= 2048 MB
Processor Speed	= 1.2 GHz (4)
Processor ID	= d63c1820917c45c8
Serial Number	= 7559030029990
TLI	= 32C1232
PID	= 027B
VID	= 043D
Machine Type	= 7559-198
Asset Tag	=
Last Disk Wipe	= Never
Last Settings Wipe	= 25-03-2026 11:58 AM
Engine ID	= 35
Debug Level	= Ship
Active Adapter	= Ethernet
Kernel	= CXTMH.230.408
Base	= CXTMH.230.408
Engine	= A8X6.3Y7.0220.G00.0200
Panel	= f2.4p16v4n2.2.0.10t2r4
Green Micro	= v2.14
Font	= 9.00-U7.9.2-H
Embedded Solutions	= 7.2.0
Cloud Solutions Framework	= 2.3.0
Cloud Solutions Framework	= Enabled
Base	= 18-Dec-24 13:46
Crypto Module	= 3.7
Crypto Core	= 2.1
Scanner Version	= A8X43Y70024G000500:A8X...
Standard Bin	=
Tray 1	=
Tray 2	=
Tray 3	=
Output Bin 1	= A3EP.OY0.0071.G00.2000
Output Bin 2	= A3EP.OY0.0071.G00.2000
Output Bin 3	= A3ER.OY0.0071.G00.1000
Security Module	= 0
Analog Fax Installed	= Yes

Test Page



The quick brown fox jumps over the lazy dog.
The quick brown fox jumps over the lazy dog.
The quick brown fox jumps over the lazy dog.
The quick brown fox jumps over the lazy dog.
The quick brown fox jumps over the lazy dog.
The quick brown fox jumps over the lazy dog.
The quick brown fox jumps over the lazy dog.
The quick brown fox jumps over the lazy dog.
The quick brown fox jumps over the lazy dog.
The quick brown fox jumps over the lazy dog.

