

Device Statistics (Page 1)



JOB INFORMATION

Printed by Emulation

PCL5 Emulation	3
PCLXL Emulation	952
PDF Emulation	39
Copy	58
HDFilters Emulation (.doc)	18
Total	1070

Jobs by Document Length

Job Length	Job Count	Avg Job Length
1-1 Pages	404	1
2-4 Pages	473	2
5-10 Pages	149	6
11-20 Pages	28	13
21-30 Pages	10	25
31-50 Pages	4	37
51-74 Pages	2	52
Total	1070	3

Other Job Data

Last Printed Job	2026-02-23
Last Scan Job	2026-02-23
USB Direct Jobs	56

Media Sheet Count

Pick Count

Tray 1 pick roller	0
Tray 2 pick roller	0
Tray 3 pick roller	0
Multipurpose Feeder pick roller	0
Total	0

Media Picked Sheet Count

Picked Sheets	3114
---------------	------

Media Sheets Picked

A4-Plain Paper	3114
Total	3114

Media Printed Sheet Count

Printed Sheets

Print	2792
Copy	315
Total	3107

Media Sheets Printed

A4-Plain Paper	3107
Total	3107

Media Side Count

Media Picked Side Count

Picked Sides	3572
--------------	------

Mono Sides Picked

A4-Plain Paper	2870
Total	2870

Color Sides Picked

A4-Plain Paper	702
Total	702

Media Printed Side Count

Print

Mono	2492
Color	691
Total	3183

Copy

Mono	371
Color	11
Total	382

Total

Mono	2863
Color	702
Total	3565

Mono Sides Printed

A4-Plain Paper	2858
Total	2858

Device Statistics (Page 2)

75648500E13NX

Color Sides Printed

A4-Plain Paper	702
Total	702

Tiered Coverage Billing

Highlight Color Sides	375
Business Color Sides	237
Graphics Color Sides	90
Total	702

Sides by Toner Darkness

Toner Darkness 1	51
Toner Darkness 4	3183

N-Up Information

N-Up Number	Sides	Logical Pages
1-Up	3565	3565

Print Speed

Pages Per Minute	Sides	Pages
55	3562	3104
30	3	3

Scan Usage

Scanned Sides

A4-Scan to USB Flatbed	1
A4-Copy Flatbed	57
A4-Scan to Host Flatbed	161
A4-Copy ADF	82
A4-Scan to Host ADF	90
A4-Copy Duplex	82
A4-Scan to Host Duplex	28
A4-Scan to USB ADF	28
Total	529

Scanned Sheets

A4-Scan to USB Flatbed	1
A4-Copy Flatbed	57
A4-Scan to Host Flatbed	161
A4-Copy ADF	82
A4-Scan to Host ADF	90
A4-Copy Duplex	41
A4-Scan to Host Duplex	14
A4-Scan to USB ADF	28
Total	474

Scan-to Destinations

Copy	221
USB Direct	29
Network	279

Host	279
Total	529
Flatbed	219
ADF Simplex	200
ADF Duplex	110

Environmental Cost Data


ON Time	59583:01:49
Off Time	2977:56:24
Active Time	3:50:59
Idle Time	1274:46:26
Sleep Time	58304:02:06
Warm up total time	0:22:15

Supply Information

Black Cartridge

Serial Number	CAD201180C26
Install Date	2026-04-10

Supply Level	0%	100%
--------------	----	------



↑
72%

Device Statistics (Page 3)

75648500E13NX


Capacity 33000
Sides on Supply 8760
Return Program Yes
Days Remaining 22761
Genuine

Estimated Coverage History

Last Job 3
Printer Lifetime 5.3
Installed Supply 0.0
Previous Supply 5.3

Cyan Cartridge

Serial Number CAS1833004C2
Install Date 2019-03-21

0%  100%

Supply Level 
Capacity 17000
Sides on Supply 746
Return Program Yes
Days Remaining 17000
Genuine


Estimated Coverage History

Last Job 0
Printer Lifetime 3.5
Installed Supply 3.3

Magenta Cartridge

Serial Number CAS18327055E
Install Date 2019-03-21

0%  100%

Supply Level 
Capacity 17000
Sides on Supply 746
Return Program Yes
Days Remaining 17000
Genuine

Estimated Coverage History

Last Job 0
Printer Lifetime 2.1
Installed Supply 2.0

Yellow Cartridge

Serial Number CAS183270152
Install Date 2019-03-21

0%  100%

Supply Level 
Capacity 17000
Sides on Supply 746
Return Program Yes
Days Remaining 17000
Genuine

Estimated Coverage History

Last Job 0
Printer Lifetime <2
Installed Supply 1.8

Black Photoconductor

Install Date 2018-12-13

0%  100%

Supply Level 
Capacity 175000
Sides on Supply 3736
Revs on Supply 18843
Return Program No
Serial Number CAS1833703D0
Genuine

Cyan Photoconductor


Install Date 2018-12-13

0%  100%

Supply Level 
Capacity 175000
Sides on Supply 846
Revs on Supply 6205
Return Program No
Serial Number CAS183350241
Genuine

Magenta Photoconductor

Install Date 2018-12-13

0%  100%

Supply Level 
Capacity 175000

Device Statistics (Page 4)

75648500E13NX

Sides on Supply 846
Revs on Supply 6208
Return Program No
Serial Number CAS18341008D
Genuine

Yellow Photoconductor

Install Date 2018-12-13
0% 100%

Supply Level
Capacity 175000
Sides on Supply 846
Revs on Supply 6205
Return Program No
Serial Number CAS183350391
Genuine

Fuser

0% 100%

Supply Level
Capacity 300000
Sides on Supply 3570
Revs on Supply 22954
Return Program No
Serial Number 02M44483280111
Genuine

Transfer Module

0% 100%

Supply Level
Capacity 300000
Return Program No

Filter

Supply Level
Capacity 300000
Sides on Supply 3570
Revs on Supply 0
Serial Number

Cyan Developer

Install Date 2018-12-13
0% 100%

Supply Level
Capacity 300000
Sides on Supply 846
Revs on Supply 16957
Return Program Yes
Serial Number CAS18335011E
Genuine

Magenta Developer

Install Date 2018-12-13
0% 100%

Supply Level
Capacity 300000
Sides on Supply 846
Revs on Supply 16965
Return Program Yes
Serial Number CAS18340042A
Genuine

Yellow Developer

Install Date 2018-12-13
0% 100%

Supply Level
Capacity 300000
Sides on Supply 846
Revs on Supply 16957
Return Program Yes
Serial Number CAS1833502FE
Genuine

Black Developer

Install Date 2018-12-13
0% 100%

Supply Level
Capacity 300000
Sides on Supply 3736
Revs on Supply 52417
Return Program Yes
Serial Number CAS1833702E3

Device Statistics (Page 5)

75648500E13NX

Genuine

Waste Toner Bottle

Supply Level OK

Capacity 115000

Return Program No

Staples

Supply Level OK

Capacity 5000

Sides on Supply 0

Revs on Supply 0

Serial Number LEX71F3734

ADF Kit

Supply Level OK

Printer

Install Date 2019-03-21

Serial Number 75648500E13NX

Asset Tag

Engine ID 55

Model Name Lexmark CX825

Date Printed 2026-04-10

USB Direct

Insertions 7

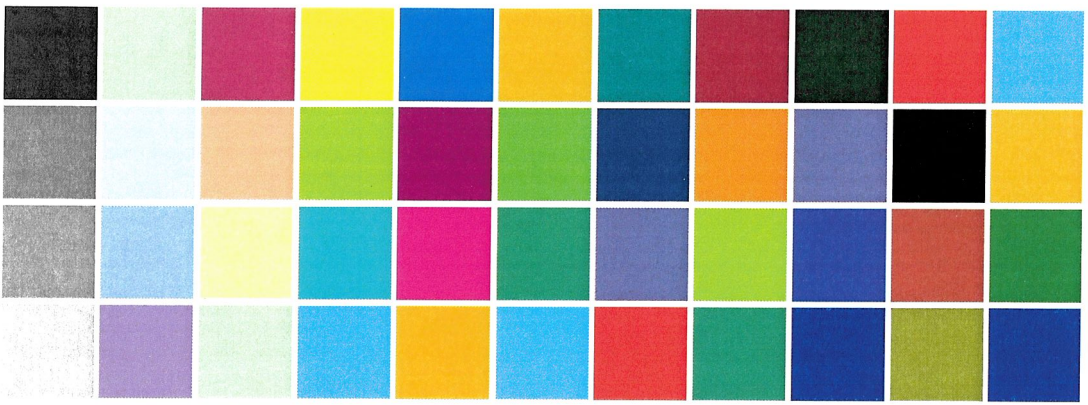
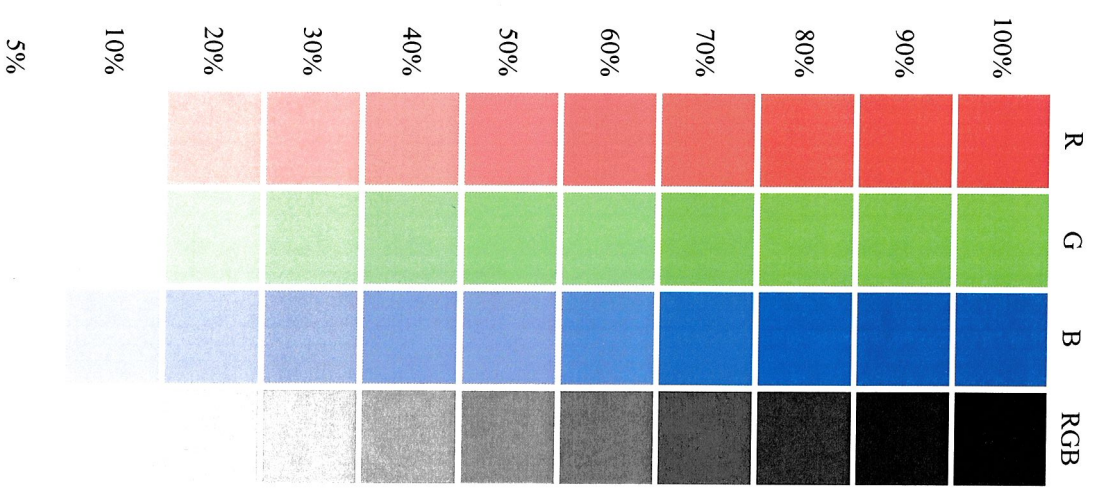
Device Information

Printer ID = Device is not connected with Lexmark Cloud Services.
Page Count = 3572
Installed Memory = 2048 MB
Processor Speed = 1.6 GHz (4)
Processor ID = 001945d31d0503b7
Serial Number = 75648500E13NX
TLI = 42K0336
PID = 025A
VID = 043D
Machine Type = 7564-337
Asset Tag =
Last Disk Wipe = Never
Last Settings Wipe = 23-02-2026 06:09 AM

CalSet

C Developer Operating Po... = 3.2000
C Laser Operating Point ... = 5.0000
C Linearization Stat ... = 1.0000
M Developer Operating Po... = 3.6000
M Laser Operating Point ... = 5.0000
M Linearization Stat ... = 1.0000
Y Developer Operating Po... = 3.7000
Y Laser Operating Point ... = 5.0000
Y Linearization Stat ... = 1.0000
K Developer Operating Po... = 5.2000
K Laser Operating Point ... = 5.0000
K Linearization Stat ... = 1.0000
Color Alignment Stat ... = 1.0000
Calibration Preference ... = 3.0000
Temperature at Calibrati... = 18.5703
Humidity at Calibration ... = 15.4258
Last Calibration ... = 3460.0000
Sensor Characterization ... = 1.0000
Sensor Hardware Stat ... = 1.0000
Engine ID = 55
Fuser Type = 1
Debug Level = Ship
Active Adapter = Ethernet
Kernel = CXTPP.230.220
Base = CXTPP.230.220
Engine = YK.230.E043
Panel = f2.4p16v4n2.2.0.10t2r4
Green Micro = v1.66
Font = 9.00-U7.6-H
Embedded Solutions = 7.1.0
Cloud Solutions Framework = 2.3.0
Cloud Solutions Framework = Enabled
Base = 21-Feb-24 16:52
Crypto Module = 3.6
Crypto Core = 2.1
Scanner Version = 230.220
Stapler = A1.34_B2.7
Tray 1 =
Tray 2 = A15.24_B2.3
Tray 3 = A15.24_B2.3
Security Module = 0
Analog Fax Installed = Yes

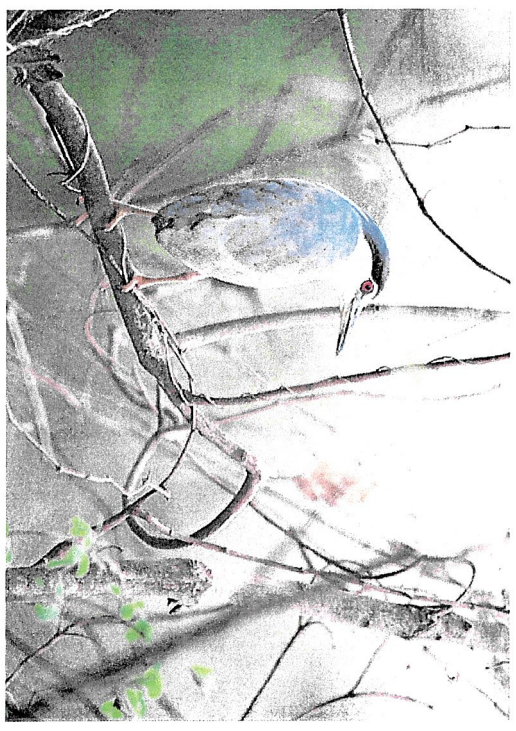
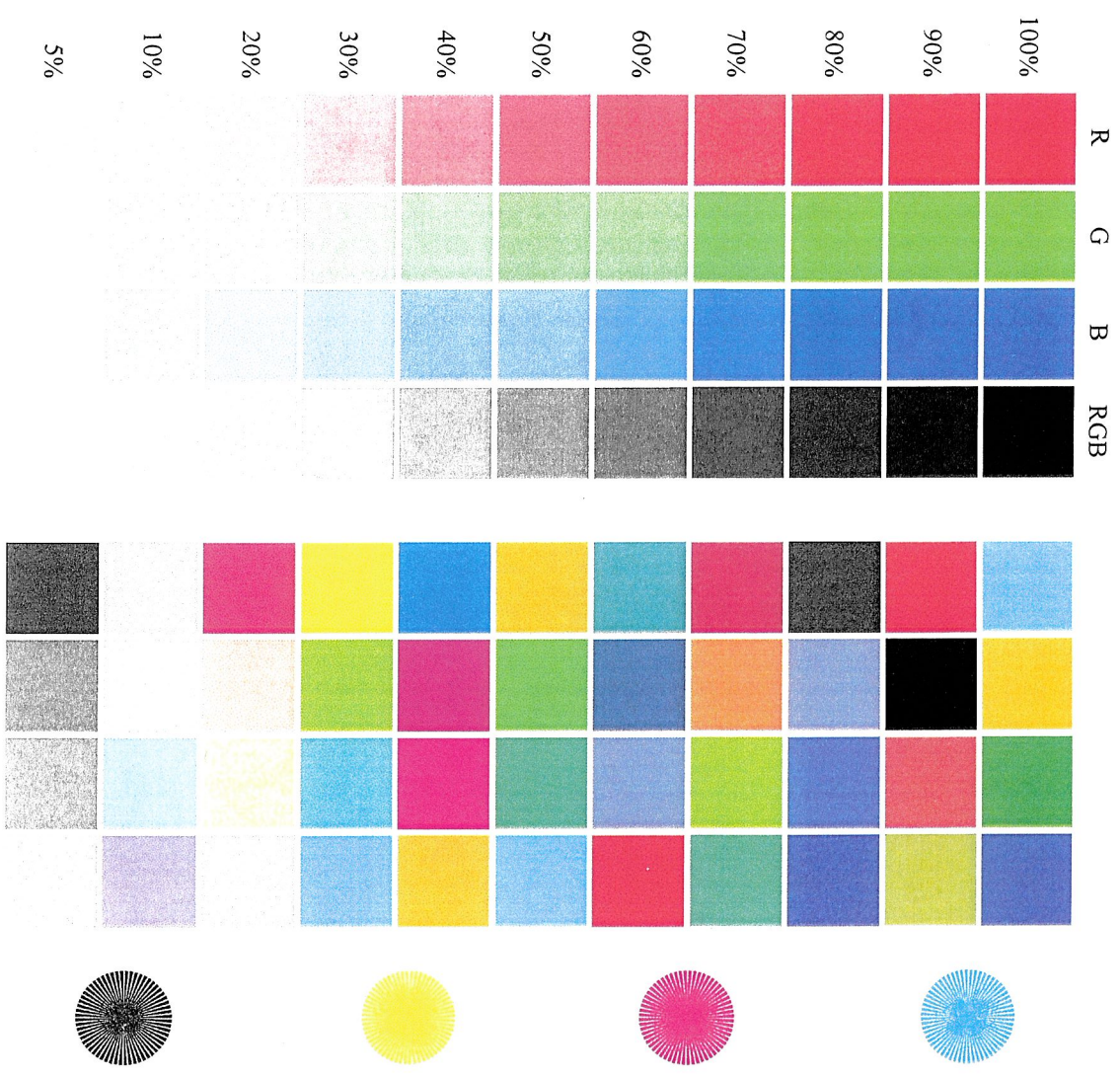
Test Page



The quick brown fox jumps over the lazy dog.
The quick brown fox jumps over the lazy dog.
The quick brown fox jumps over the lazy dog.
The quick brown fox jumps over the lazy dog.
The quick brown fox jumps over the lazy dog.
The quick brown fox jumps over the laz
The quick brown fox jumps over th
The quick brown fox jumps ove
The quick brown fox jump

Test Page

26C8FA56 A4 XERO



The quick brown fox jumps over the lazy dog.
The quick brown fox jumps over the lazy dog.
The quick brown fox jumps over the lazy dog.
The quick brown fox jumps over the lazy dog.
The quick brown fox jumps over the lazy dog.
The quick brown fox jumps over the laz
The quick brown fox jumps over th
The quick brown fox jumps ove
The quick brown fox jump